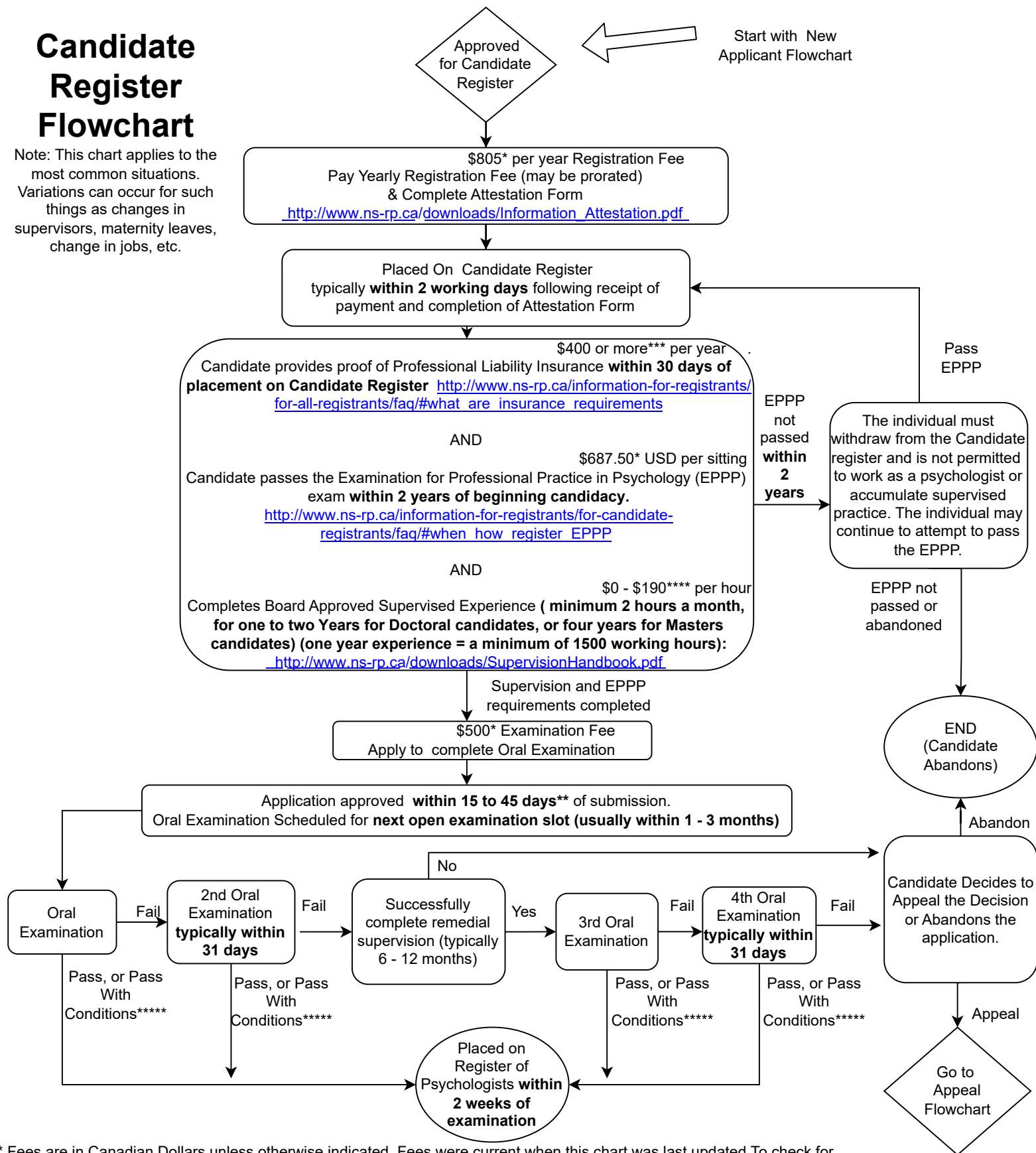


# Candidate Register Flowchart

Note: This chart applies to the most common situations. Variations can occur for such things as changes in supervisors, maternity leaves, change in jobs, etc.



\* Fees are in Canadian Dollars unless otherwise indicated. Fees were current when this chart was last updated. To check for current fees, goto <http://www.ns-rp.ca/about-nsbep/all-fees/>

\*\* TA monthly cutoff of the 15th applies for all items (applications/exams). Complete items submitted by the 15th are reviewed by month-end, with results emailed within two weeks. Dec 15th items are processed by mid-Jan, due to yearly holiday closures, see: [https://www.ns-rp.ca/about-nsbep/information-for-registrantsfor-all-registrantsnewsmeeting\\_dates/](https://www.ns-rp.ca/about-nsbep/information-for-registrantsfor-all-registrantsnewsmeeting_dates/)

\*\*\* All Psychologists and Psychologists (Candidates Register) are required to have professional liability insurance. NSRP does not provide insurance and this must be obtained directly from an insurance company. See [http://www.ns-rp.ca/information-for-registrants-for-all-registrants/faq/#what\\_are\\_insurance\\_requirements](http://www.ns-rp.ca/information-for-registrants-for-all-registrants/faq/#what_are_insurance_requirements)

\*\*\*\* Most supervisors do not request payment for providing supervision. If payment is requested, this may be on a sliding scale but is often at usual private practice hourly session fee.

\*\*\*\*\* Pass with conditions can be appealed.